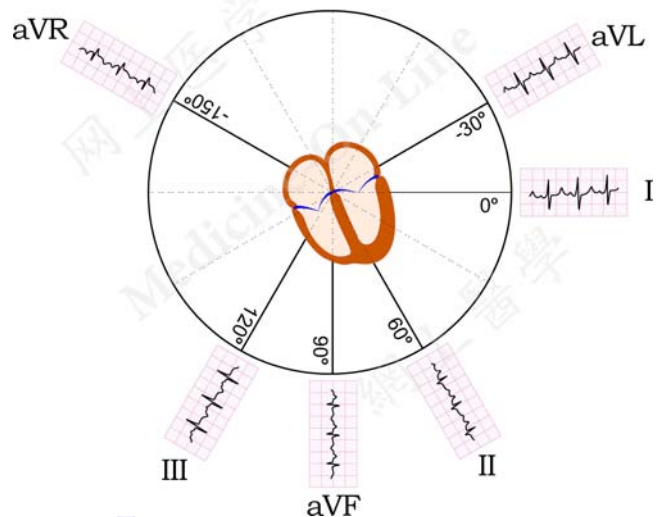


The ECG Leads

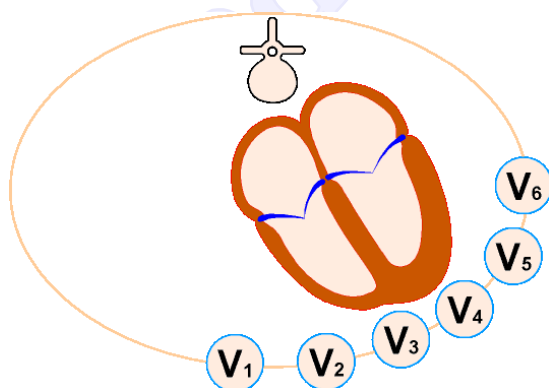
The heart occupies a position in the center of the thorax and a 12-lead ECG is simply a recording of the current flux of cardiac depolarization and repolarization obtained from 12 different sites on the body surface.

There are six limb leads:

- ✧ Lead I records from the left at a coordinate of 0° .
- ✧ Lead II records from the foot at a coordinate of 60° .
- ✧ Lead III records from the foot at a coordinate of 120° .
- ✧ Lead aVR records from the right shoulder at a coordinate of -150° .
- ✧ Lead aVL records from the left shoulder at a coordinate of -30° .
- ✧ Lead aVF records directly from the feet below at a coordinate of 90° .



There are also six chest leads with sensing electrodes positioned horizontally around the left anterior hemi-thorax between the 4th and 5th interspaces:



- ✧ Leads V1 and V2 record the current flux over the right ventricle directly.
- ✧ Leads V3 and V4 record directly the electrical activities of the ventricular septum and the anterior wall of the left ventricle.
- ✧ Leads V5 and V6 record the current flow generated by the left ventricle directly.