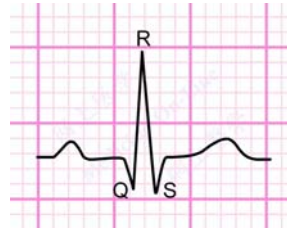


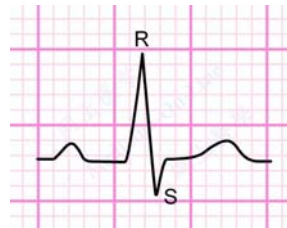
A QRS complex with QRS deflections:



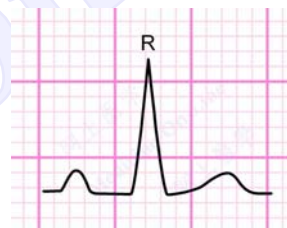
A QRS complex with QR deflections:



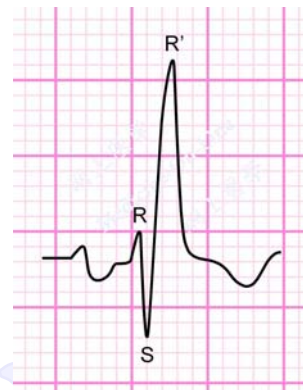
A QRS complex with RS deflections:



A QRS complex with only an R wave:



A QRS complex with RSR' deflections:



A QRS complex with a QS wave:



(NB: The first wave of the last complex is a negative deflection. Therefore, it qualifies to be called a Q wave. Since all QRS complexes have an R wave, there must be one in this example as well, although it may be so small that it is not visible. A negative