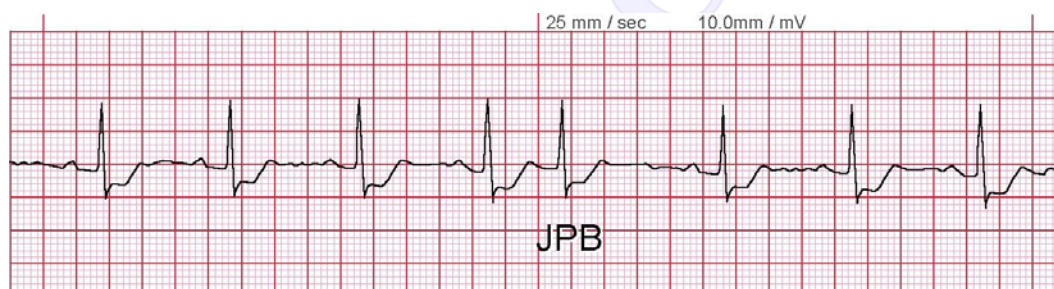


Atrial Premature Beat



Atrial premature beat (APB) arises from an irritable focus in one of the atria. It depolarizes the atria prematurely (premature to the next timely sinus beat) and produces a P wave that looks different from a sinus-node generated P wave because the direction in which the atria depolarize is abnormal (abnormal P wave axis). Since the premature atrial impulse is conducted in a normal fashion via the AV node, the His bundle, and the bundle branches to depolarize the ventricles, the QRS complex associated with an APB has normal QRS duration and the same morphology as that of the sinus beat.

Junctional Premature Beat



Junctional premature beat (JPB) arises from an irritable focus at the AV junction. The P wave associated with atrial depolarization in this instance is usually buried inside the QRS complex and not visible (see “Junctional Escape” above).