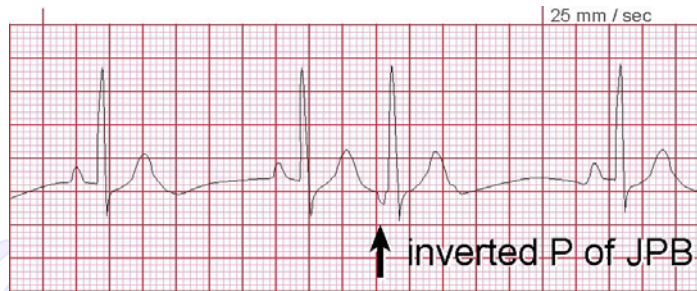
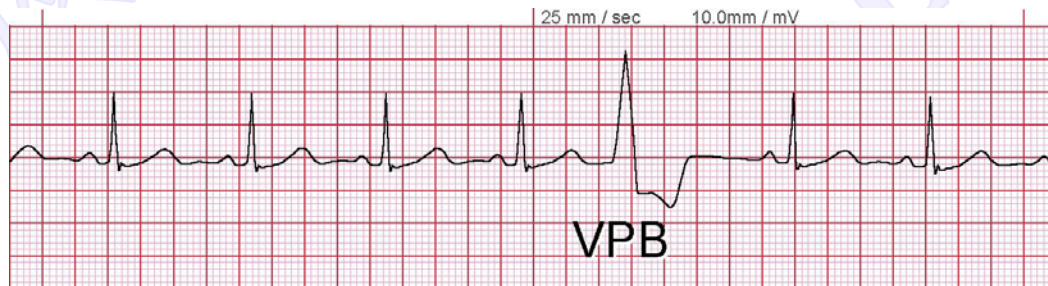


However, the P wave may appear on occasions either immediately before or immediately after the QRS complex. When it is visible, the P wave is negative in lead II and positive in lead aVR because of retrograde atrial depolarization.



Since the premature junctional impulse is conducted in a normal fashion down the His bundle and bundle branches to depolarize the ventricles, the QRS associated with JPB has normal duration and the same morphology as that of the sinus-node generated beat.

Ventricular Premature Beat



Ventricular premature beat arises from an irritable focus in the ventricles. Ventricular premature impulse is not transmitted to the rest of the ventricles along the His bundle and bundle branches. It is conducted along abnormal pathway in the ventricular myocardium. This slow process produces an abnormally wide QRS and bizarre looking T wave. Being a ventricle-generated beat, there is no P wave activity before the QRS complex.