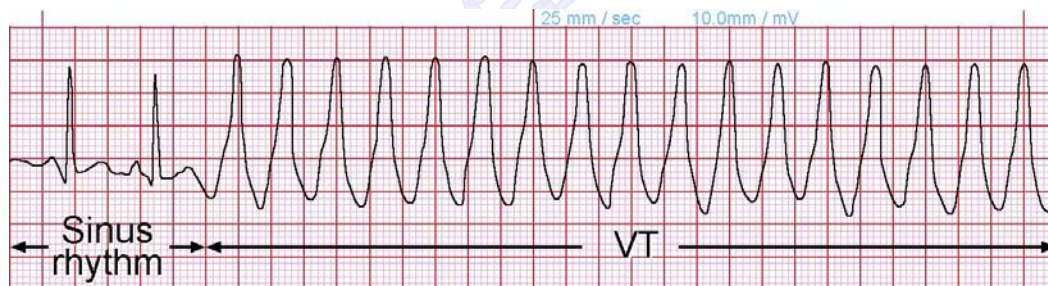


down the His Bundle and bundle branches, the ventricles are activated normally and their QRS complexes are normal in width and have the same morphology as that of sinus beats.

Monomorphic Ventricular Tachycardia



Ventricular tachycardia (VT) arises from an irritable ventricular focus that discharges premature impulses for 3 or more beats without interruption. The rate of depolarization is 150/min or faster. Since these impulses are conducted to the rest of the ventricles via abnormal pathway in the ventricular myocardium and not via the His Bundle and bundle branches, the QRS complexes are broader than normal and without distinguishable T waves. In monomorphic VT, consecutive QRS complexes have the same appearance.

Polymorphic Ventricular Tachycardia

In polymorphic ventricular tachycardia, there is beat-to-beat variation in the QRS morphology. A common example is Torsades de Pointes (twisting of the points) shown below:

