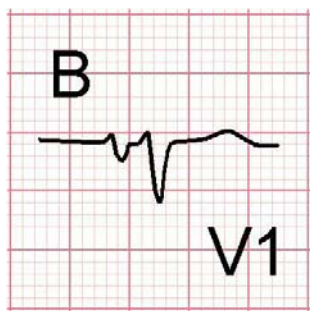
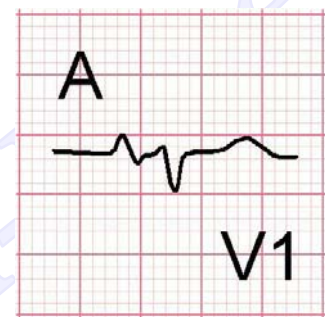


In left atrial abnormality left atrial depolarization lasts longer than normal but its amplitude remains unchanged.

Therefore, the height of the resultant P wave remains within normal limits but its duration is longer than 120 ms. A notch (broken line) near its peak may or may not be present.

A biphasic P wave in V1 is another sign suggesting atrial abnormality. In right atrial abnormality, the initial positive portion of the biphasic P wave is larger than the terminal negative portion.



A biphasic P wave in V1, with its terminal negative deflection more than 40 ms wide and more than 1 mm deep is another ECG sign of left atrial abnormality.