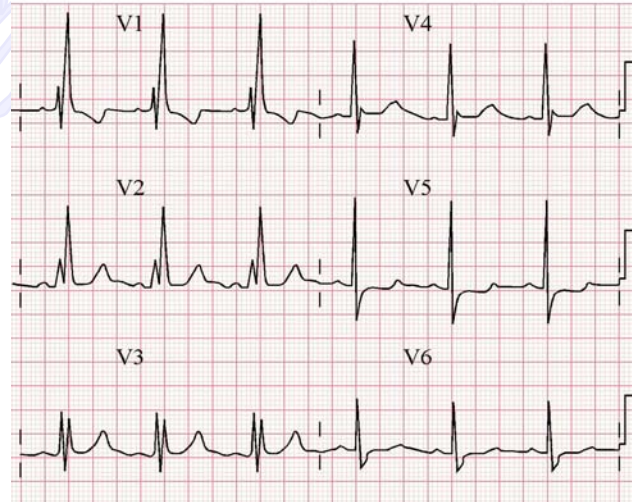


waves only; or it may be hardly visible such that the QRS complex is simply a tall and wide R wave.

In right bundle branch block (RBBB), the widened RR' complex is seen most typically in V1. Secondary T wave inversion can also be seen in this lead because when depolarization is abnormal repolarization can also be expected to be abnormal. Since the late right ventricular depolarization current moves away from left chest leads, it shows up as wide S waves in V6. When there is an RR' complex in V1 but it is less than 120 ms wide, the condition is called incomplete right bundle branch block.



In left bundle branch block (LBBB) the widened RR' complex is seen most typically in V6. Secondary T wave inversion is present in the left but not right chest leads. Since the late left ventricular depolarization current moves away from the right chest leads, it shows up as deep and broad S waves in V1.

