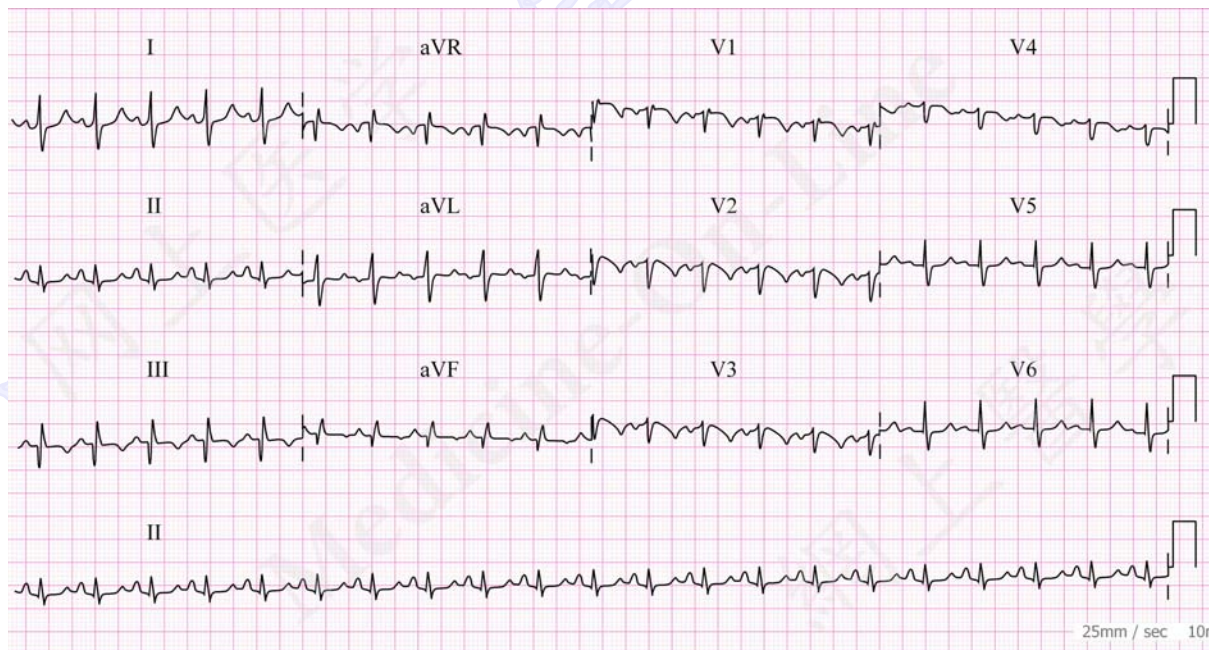


Pulmonary Embolism

The classical ECG signs of acute pulmonary embolism are $S_1Q_{III}T_{III}$, which are mnemonics representing deep S wave in lead I, pathological Q wave in lead III, and inverted T wave in lead III:



Other nonspecific signs include (see ECG above):

- ✦ Sinus tachycardia and atrial and ventricular ectopic beats.
- ✦ Right axis deviation.
- ✦ Right ventricular strain pattern with inverted T waves in right chest leads.
- ✦ Incomplete or complete right bundle branch block pattern.
- ✦ Slow R wave progression in chest leads

But all these ECG signs may not be present even in frank pulmonary embolism.